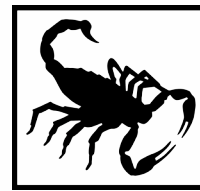


**TraFFix
Devices Inc.**



Scorpion II®

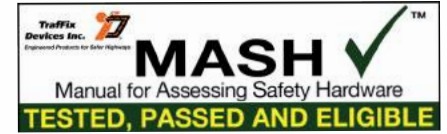
TraFFix Devices Inc.

www.traffixdevices.com

PAT. #6,024,341 #6,581,992 #1 #6,926,324 #1 #7,243,964 #1
#7,438,337 #1 #6,092,959 #6,491,920#1

Engineered Products for Safer Highways

**Scorpion II® TL-3 (100 kph) Truck Mounted Attenuator
MASH Tested, Passed and Eligible**

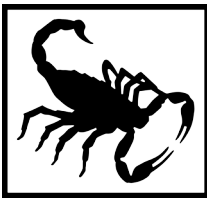


10000-TL3M-12(C, FBS or S)

PRODUCT BULLETIN

- Over 2,000 documented hits involving Scorpions and thousands of lives saved around the world. Scorpion's Patented design has over seventeen years of proven life saving performance on highways around the globe.
- Protect your workers with the safest, most reliable truck mounted attenuator available today.
- The FIRST Truck Mounted Attenuator eligible for MASH, TL-3 62.5 mph (100 kph). FHWA Eligibility Letter, CC-132, dated June 15, 2017.
- Full Width Impact Protection - Safely protects and redirects the impacting vehicle away from the "coffin corner" area at the rear of the truck.
- Curved Aluminum Tube Frame - Exceptionally strong, providing protection against nuisance impacts with re-directional capacity along the entire length of the TMA.
- Energy Absorbing Cushions - Aluminum honeycomb core, enclosed by aluminum powder coated modules providing maximum durability and longevity.
- Modular Design - When impacted, the Scorpion II crushes in progressive stages, which results in lower repair costs and easy parts replacement.
- Shortest Overall Length, only 13' (4 m) in use position when compared to other competitors units that are over 19' (5.8 m) long when fully deployed- minimizes incidental impacts which reduces repair costs.
- Open Cartridge Design - reduced wind resistance increases fuel efficiency in storage and transport mode, even when traveling at highway speeds.
- Tested and Eligible with a minimum host truck vehicle weight of only 15,000 lbs (6,804 kg).
- Infinite weight eligible - can be used on a host vehicle from 15,000 lbs (6,804 kg) with no upper weight limit.
- Available with optional Dr. Airbrake® automatic braking system, instantly locks brakes of host vehicle upon impact.
- LED Lighting Standard - All lights are now LED, including tail lights, back up, turn signals and running lights.

www.traffixdevices.com



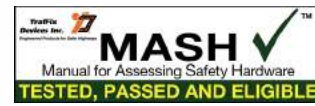
Scorpion II®

TraFFix Devices Inc.

www.traffixdevices.com

PAT #6,024,341 #6,581,902 B1 #6,026,334 B1 #7,243,964 B1
#7,438,337 B1 #6,092,959 #6,481,920B1

Scorpion II TL-3 Truck Mounted Attenuator
MASH Tested, Passed and Eligible



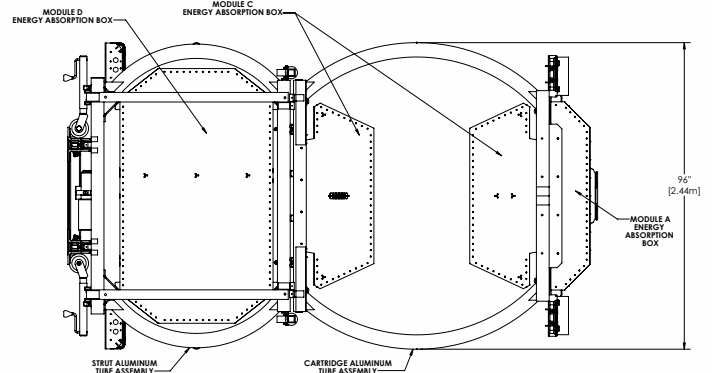
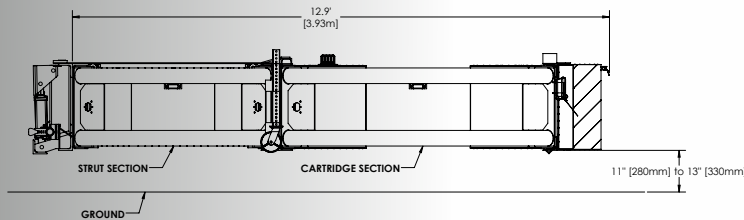
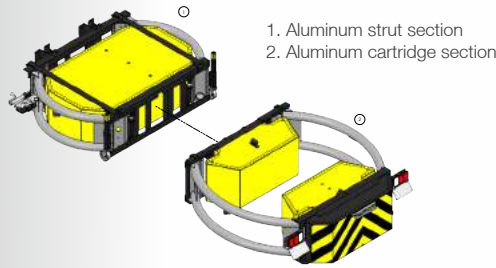
Scorpion II TL-3 (62.5 mph/100 kph) Truck Mounted Attenuator Specification

The Truck Mounted Attenuator (TMA) is a mobile crash cushion attached to the rear of a support vehicle's frame. The TMA may be used on moving shadow trucks, stationary block vehicles, or advanced warning vehicles upstream of a moving or stationary operation. The TMA shall be tested, passed and eligible to MASH TL-3 (62.5 mph / 100 kph). The TMA can be used on support vehicles with a min. actual/curb weight of 15,000 lbs (6,804 kg) with no upper weight limit (infinite weight). Lighting consists of LED brake, directional, signal and running lights for enhancement of advanced warning to drivers. The TL-3 TMA has an overall dimension of 12.94 ft. (3.9 m) x 8.0 ft (2.4 m) x 2.0 ft (0.6 m) and has a ground clearance of 12 in ± 1 in (305 mm ± 25.4 mm) when deployed in the horizontal operating position. The Scorpion II TMA consists of three (3) main components: Strut, Cartridge, and backup/diaphragm frames. The Strut and Cartridge are the energy attenuation components. The Strut is positioned nearest to the support vehicle and the Cartridge is positioned furthest away from the support vehicle. The Cartridge is typically the first component impacted by an errant vehicle. The Strut consists of four (4) outboard convex aluminum tubes (two on each side) forming an aluminum structural weldment. The aluminum structural weldments bolt to a structural steel diaphragm/backup frame. The TMA can be rotated in a double 90° fold position over the support vehicles bed with a stored height of less than 12'5" (3.8 m). An optional hydraulic powered vertical lift can be utilized with the TMA to deploy a display panel when the TMA is lowered into the use position. The vertical lift is powered by the same onboard hydraulic system that rotates the TMA into the stored and use position. The vertical lift is sequenced to raise and lower a panel for displaying advanced messages, directional indicators, or other notifications.



Scorpion II® TL-3 TMA Impacted by 5,046 lbs (2,289 kg) Pick-Up Truck

TL-3 SPECIFICATIONS	
Length:	12.9 ft (3.9 m)
Width:	8.0 ft (2.4 m)
Height from the ground:	12.0 in ± 1.0 in (305 mm ± 25.4 mm)



Distributed by:



160 Avenida La Pata, San Clemente, CA 92673
(949) 361-5663 FAX (949) 361-9205
www.traffixdevices.com