

Creating a Sentinel account

Go to <https://sentinel.traffixdevices.com/sign-up> and enter your name, company, email, phone, and address as demonstrated below, then click next.



First name

Cobus

Last name

Conradie

Company

Traffix Devices

Email

cconradie@traffixdevices.com

Phone



+1 1 540 250 7264

Address

160 Avenida La Pata, San Clemente, CA 92672, USA

Distributor name

NONE

Next

Review the information if you see any errors, click on back. If everything looks correct, agree to the terms and conditions, and click on Create account.



Order Summary

Company	Traffix Devices
Name	Cobus Conradie
Address	160 Avenida La Pata, San Clemente, 92672, California, United States
Phone	+115402507264
Email	cconradie@traffixdevices.com
Distributor	NONE

I agree to the [Terms of Service](#).

Back

Create account

The website will confirm the creation request. At this point, your account request will be reviewed by Traffix Devices personnel and approved.



Your request has been received and we will be in touch soon. Thanks!

Back to home

Once approval is done you will receive a confirmation email that will allow you to complete registration and create a password.



Hello, Cobus!

TrafiX Devices has invited you to join the **TrafiX Devices, Inc.** Sentinel Impact Tracker group.

This will allow you to view and manage the traffic safety assets on the account, get alerts when there is a suspected impact, and report notes and inspections on the safety assets.

Complete your registration by clicking the button below. This link will expire in one hour.

Complete registration

Enter your password and create account.



Welcome!

Create a password to complete your registration.

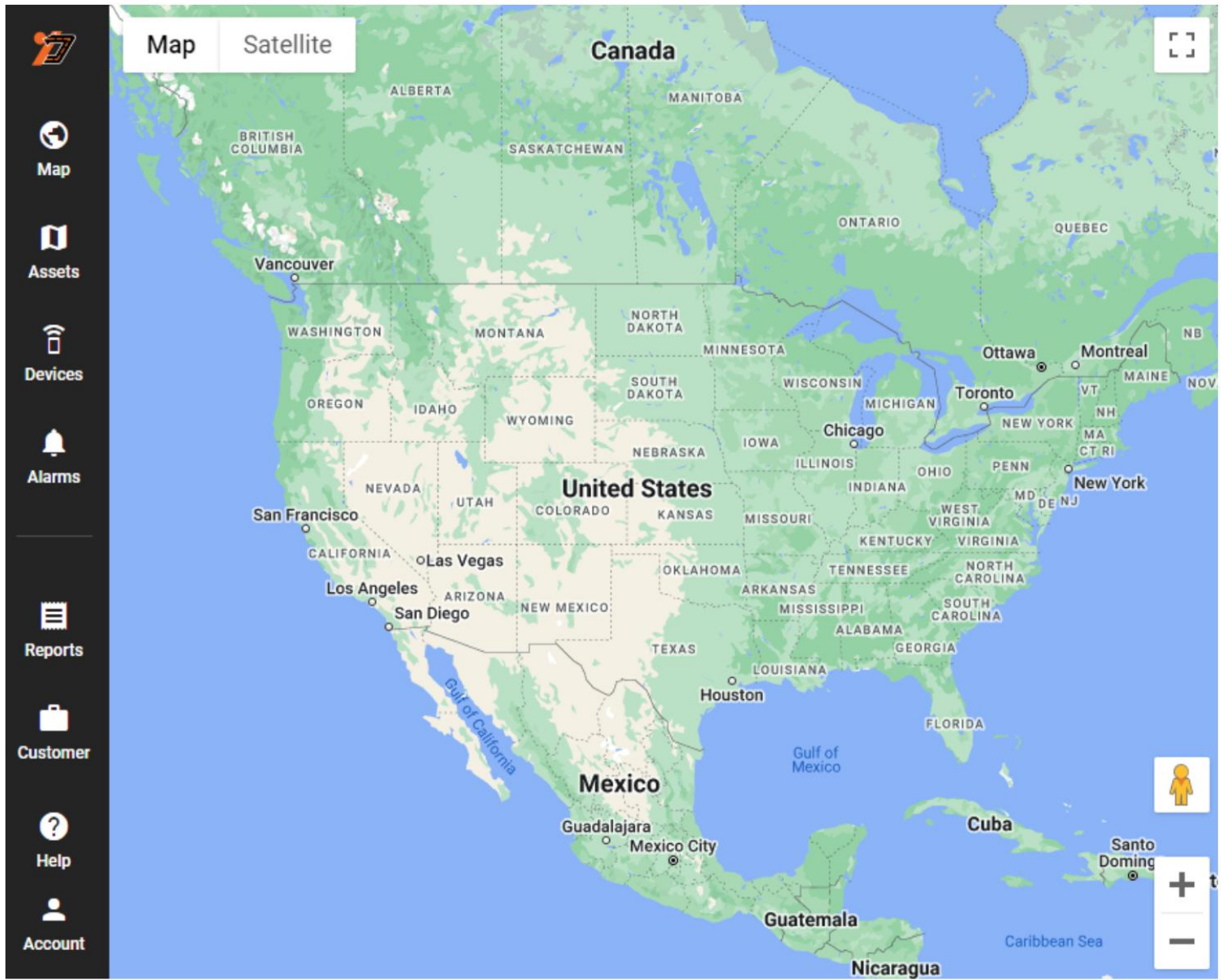
Password

Confirm password

I agree to the [Terms of Service](#).

Create account

Now that you have an account you are ready to add devices to it!



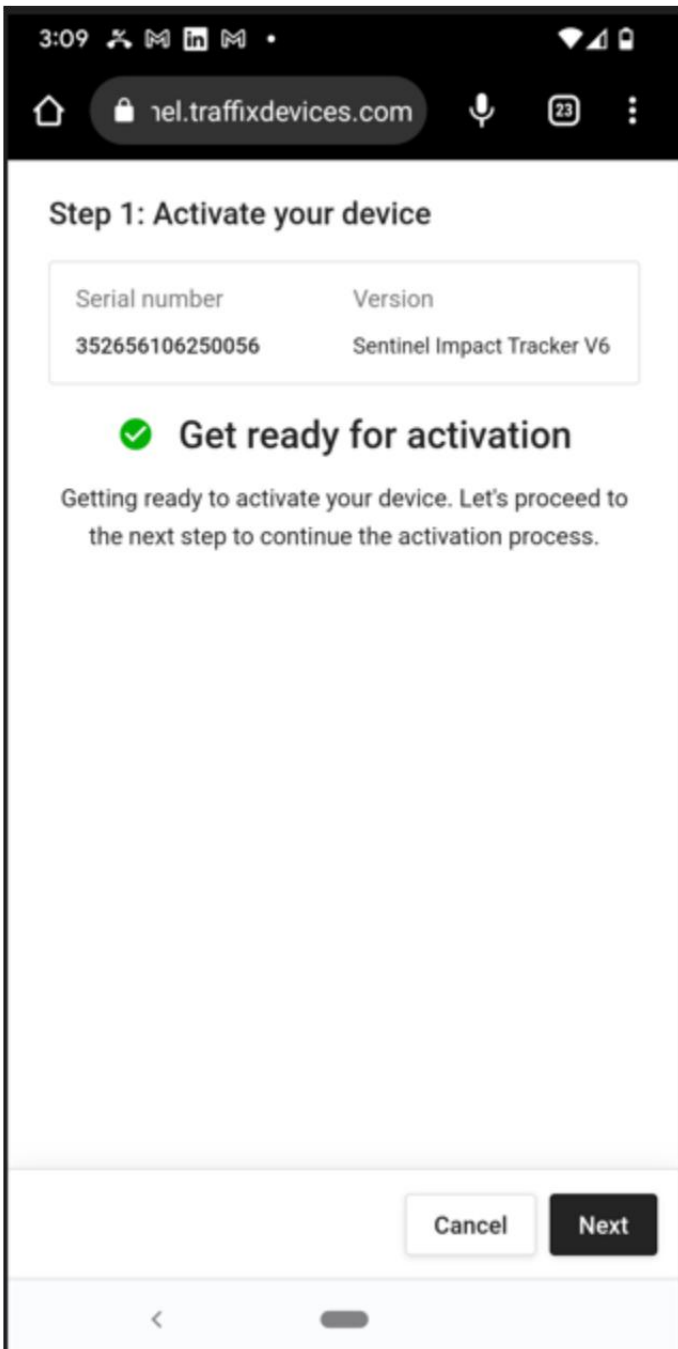
Adding Devices

To add a device is as easy as scanning the QR code on the device and following the prompts.

To add a device is as easy as scanning the QR code on the device and following the prompts.



Scan the QR and confirm this is the device you would like to add.



Indicate if this is a new device or replacing an existing device.


The screenshot shows a mobile browser interface with a dark header bar. The time is 3:09. The address bar shows the URL 1el.traffixdevices.com. The main content area is titled "Step 2: New device or swap devices" and asks "What would you like to do?". There are two selection cards: "New device" with a pencil icon and "Swap devices" with a circular arrow icon. Each card has a brief instruction. At the bottom, there are "Cancel" and "Next" buttons, and a mobile navigation bar with a back arrow and a home indicator.

3:09

1el.traffixdevices.com


Step 2: New device or swap devices

What would you like to do?



New device

Choose this option if you want to activate a new device.

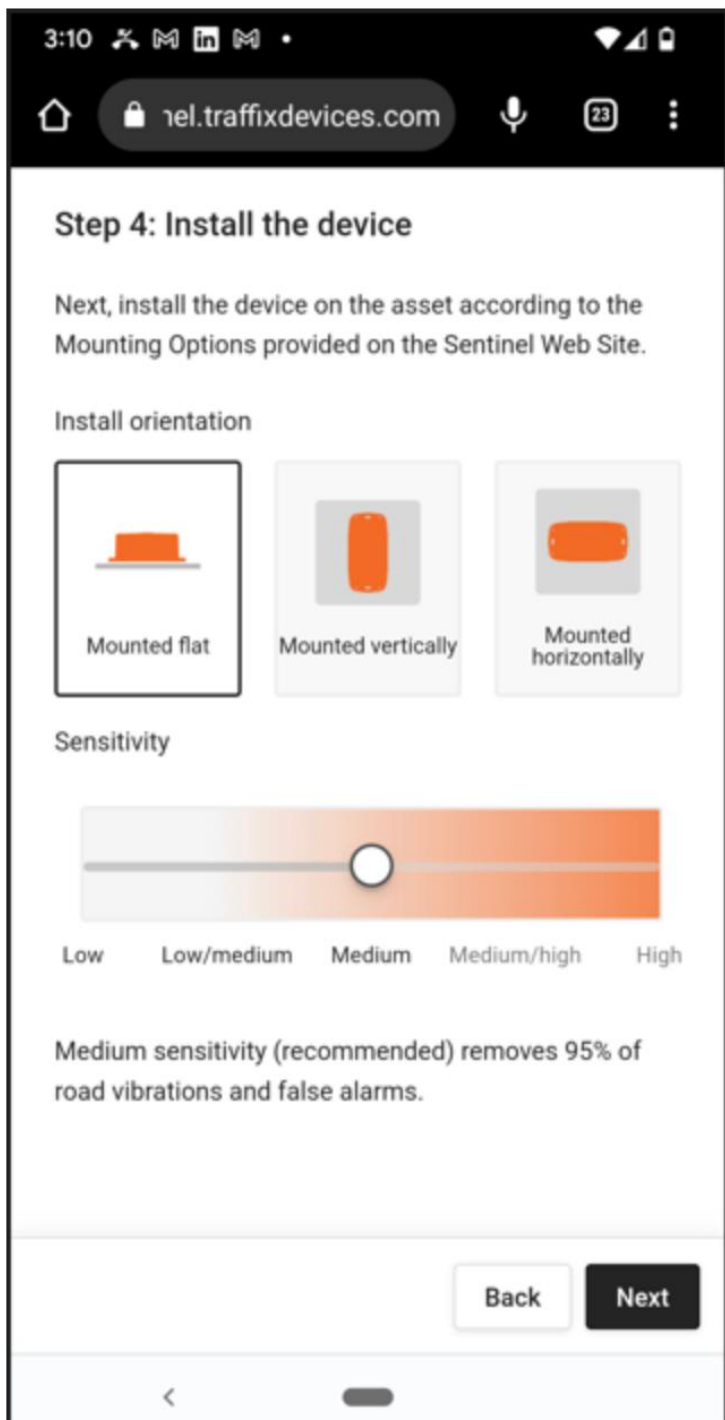


Swap devices

Choose this option if you want to swap a device from an existing asset.

Cancel Next

Select the orientation and sensitivity, if you are unsure leave the defaults as the device will detect its orientation on the first check-in and suggest a correction if required.



The screenshot shows a mobile browser interface with a black header bar. The time is 3:10, and there are icons for signal strength, Wi-Fi, and battery. The address bar shows the URL 'rel.traffixdevices.com'. The main content area is titled 'Step 4: Install the device' and includes instructions on mounting and sensitivity settings. Three orientation options are shown: 'Mounted flat', 'Mounted vertically', and 'Mounted horizontally'. A sensitivity slider is set to 'Medium', with labels for 'Low', 'Low/medium', 'Medium', 'Medium/high', and 'High'. A note states that 'Medium sensitivity (recommended) removes 95% of road vibrations and false alarms.' At the bottom, there are 'Back' and 'Next' buttons, and a mobile navigation bar with a back arrow and a home indicator.

3:10

rel.traffixdevices.com

Step 4: Install the device

Next, install the device on the asset according to the Mounting Options provided on the Sentinel Web Site.

Install orientation

Mounted flat

Mounted vertically

Mounted horizontally

Sensitivity

Low Low/medium Medium Medium/high High

Medium sensitivity (recommended) removes 95% of road vibrations and false alarms.

Back Next

We are all set this device is live and communicating.



If you log into your account you will see your device on the map, and it will communicate impacts, via text and email.

