



2020-2021

# CREATING SAFE SPACES

**TraFFix  
Devices Inc.**



Engineered Products for Safer Highways

## About Us

**TRAFFIX DEVICES, INC. IS A 34 YEAR** old manufacturer of traffic control devices and crash attenuation products. We manufacture all of our own products and take tremendous pride in their engineering and technical performance. Traffix Devices products are designed and engineered to meet the highway requirements of countries around the world. This requires engineering excellence and a clear understanding of the performance requirements in each of the countries we do business in.

**OUR CORPORATE HEADQUARTERS** are in sunny Southern California. We also have manufacturing locations in Fairfield, Iowa; Adelanto, CA; and Tijuana, Mexico. The common thread running through all aspects of our business is that we design, engineer, manufacture, and support products which save lives on the world's highways. Preserving the lives of highway workers and motorists is of utmost importance. We have outstanding distributor & OEM partners in North America and around the globe. Our partners have provided us with the reach necessary to get the word out about the superior performance of our products which save lives around the world every day.

## Contact Us

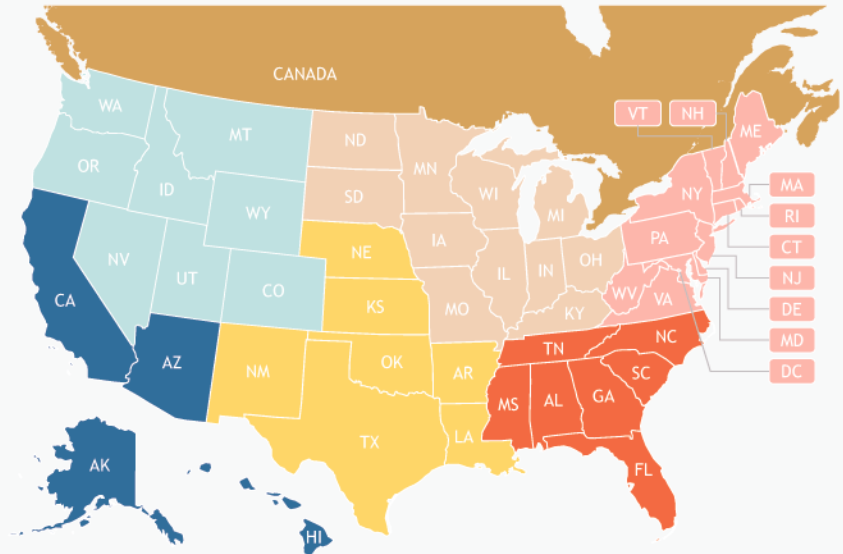
[www.traffixdevices.com](http://www.traffixdevices.com)  
(949) 361-5663  
[info@traffixdevices.com](mailto:info@traffixdevices.com)

 @TraffixDevices

 @TraffixDevices

 @TraffixDevices

## Traffix Devices Safety Professionals



Northwest Territory – Cary LeMonds

801.979.7099

Western Territory – Lawrence Berg

949.350.7048

Midwest Territory – Dave Lindquist

630.605.1273

Southwest Territory – John Gense

214.704.1476

Northeast Territory – Mike Herlehy

585.267.9970

Southeast Territory – Lary Hudoff

770.778.8281

Canada – Chris Giordano

216.233.3273

## MASH Eligibility



**THE MANUAL FOR ASSESSING SAFETY HARDWARE (MASH)** presents uniform guidelines for crash testing permanent and temporary highway safety features and recommends evaluation criteria to assess test results.

**MASH UPDATES AND REPLACES NCHRP REPORT 350.** This manual is recommended for highway design engineers, bridge engineers, safety engineers, researchers, hardware developers, crash test laboratories, and others concerned with safety features used in the highway environment. Products addressed in MASH include longitudinal barriers, transitions, end terminals, crash cushions, breakaway supports, truck mounted attenuators, and work zone traffic control devices. The crash performance is judged on structural adequacy, occupant risk, and vehicle trajectory.

**Test Level 1**  
31 MPH (50 KPH)

**Test Level 2**  
44 MPH (70 KPH)

**Test Level 3**  
62 MPH (100 KPH)





# CREATING SAFE SPACES

**04** Water-Cable Barrier™

---

**06** Water-Wall™ LCD

---

**08** Water-Wall Fence™

---

**10** Urbanite Wall®

---

**11** ADA Wall™

---

**12** Grabber® + Looper® Tubes and Cones

---

**13** Step-N-Lock® + Premier Panel™ Vertical Panels

---

**14** Enviro-Cones®

---



## SAVING LIVES AROUND THE WORLD

TraFFix Devices continues with product innovations to keep TraFFix growing and evolving, in response to the needs of the transportation and safety industry into the 21st Century and beyond. TraFFix Devices is one of the largest producers of road safety products in the world – with most of TraFFix products continuing to be manufactured in the United States. By staying on the cutting edge of product innovation, TraFFix Devices leads the industry by continuing to bring new and improved products to market.



# WATER-CABLE BARRIER™



SAN FRANCISCO, CALIFORNIA, USA

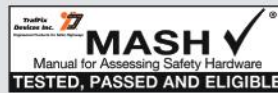


TOKYO, JAPAN



NASHVILLE, TENNESSEE, USA

## TraFFix WATER-CABLE Barrier™



- MASH tested, passed, and eligible at TL-1 31 mph (50 km/hr) and TL-2 44 mph (70 km/hr) levels
- Molded in galvanized steel cables (3) strengthens water-cable barrier to resist vehicle penetration during an impact.
- Double wall knuckle design minimizes breakage at hinge points.
- Durable polyethylene plastic with UV additives to resist fading, cracking and breaking.
- Large 8" fill hole speeds filling process, includes twist-lock plastic cap.
- Forklift/pallet jack slots for easy movement and placement.
- Standard colors are orange/red or white - additional colors available upon request.
- MASH Eligible with the Water-Wall Fence for additional security.

### WEIGHTS + MEASURES

HEIGHT	32 inches
LENGTH	72 inches
WIDTH	18 inches
WEIGHT (EMPTY)	100 lbs
WEIGHT (FILLED)	1,070 lbs





BAY AREA, CALIFORNIA, USA



OCEANSIDE, CALIFORNIA, USA



BOSTON, MASSACHUSETTS, USA



NASHVILLE, TENNESSEE, USA

**TraFFix  
WATER-CABLE  
Barrier™**



TraFFix Water-Cable Barrier® TL-2 Impacted by a 2,505 lb. (1,113 kg) KIA Rio at 44 MPH (70 KPH)



#45332-MW



#45332-MO



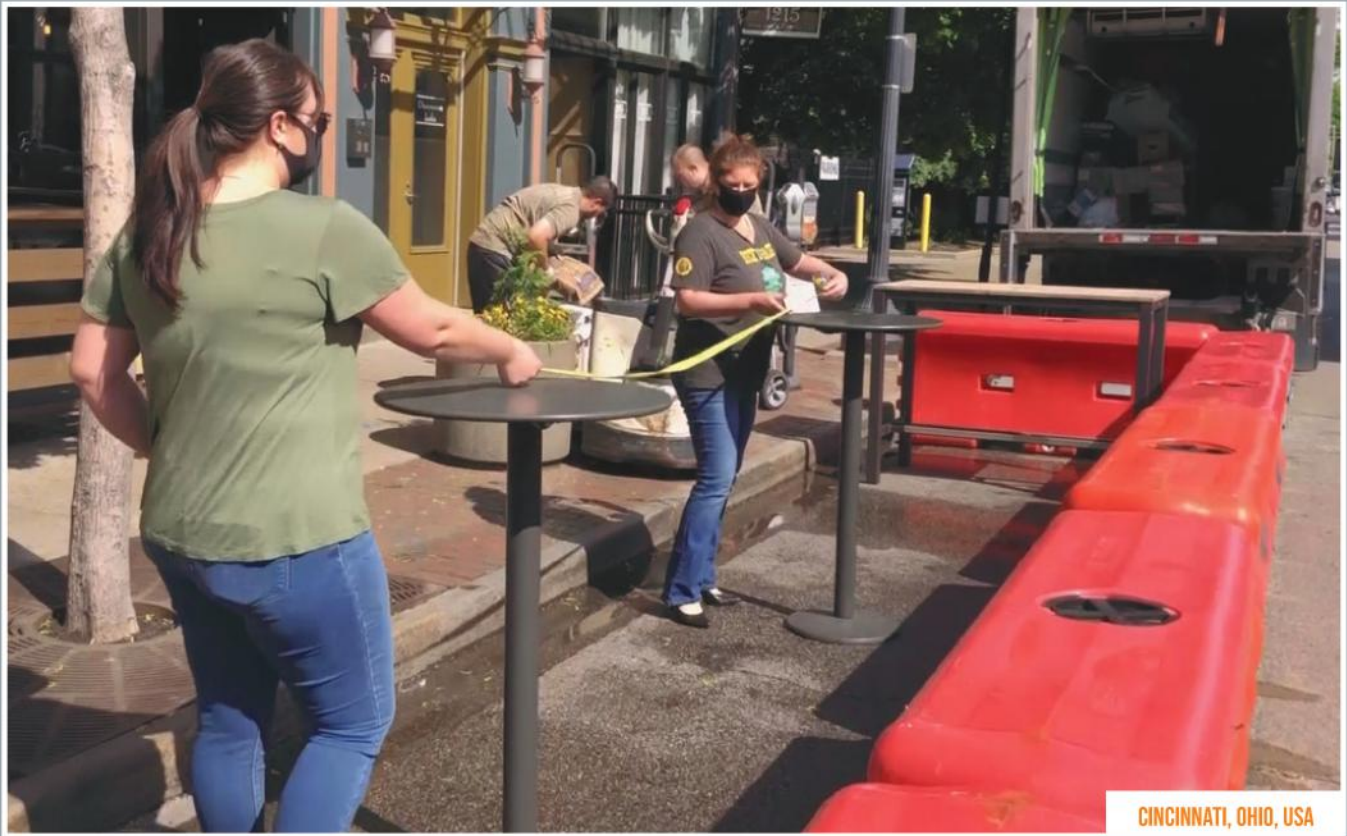
# WATER-WALL LCD™



FREMONT, CALIFORNIA, USA



DAYTON, OHIO, USA



CINCINNATI, OHIO, USA

## Water-Wall™ Longitudinal Channelizing Device



- MASH Eligible, TL-2 (44 mph) longitudinal channelizing device
- 32" tall x 72" long — low profile allows motorists in all vehicle types to view oncoming traffic at intersections.
- Durable linear low density polyethylene plastic minimized cracking and breaking.
- Double wall knuckle design minimizes breakage and creates a strong connection at hinge points.
- Tamper resistant, offset drain plug with coarse buttress thread — screws in or out in only 2.5 turns.
- MASH Eligible with the Water-Wall chain link fence for additional job site security.

### WEIGHTS + MEASURES

HEIGHT	32 inches
LENGTH	72 inches
WIDTH	18 inches
WEIGHT (EMPTY)	80 lbs
WEIGHT (FILLED)	1,110 lbs





LOS ANGELES, CALIFORNIA, USA



LINCOLN, NEBRASKA, USA



OCEANSIDE, CALIFORNIA, USA

**Water-Wall™**  
Longitudinal Channelizing Device



TrafFix Water-Wall LCD impacted by a 2,505 lb. (1,113 kg) KIA Rio at 44 MPH (70 KPH)



#45032-0



#45032-W



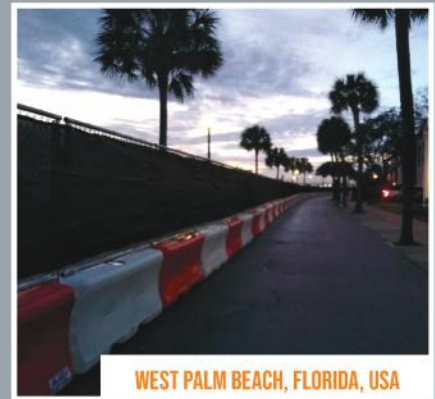
# WATER-WALL FENCE™



DALLAS, TEXAS, USA



HOUSTON, TEXAS, USA



WEST PALM BEACH, FLORIDA, USA



- Keep an area or construction zone secure with the Water-Wall Fence.
- Easily retrofits to the existing TraFFix Water-Wall or Water-Cable Barrier to create an imposing and secure barrier to unwanted entries.
- Water-Wall Fence is made of 11 gauge galvanized steel mesh, providing security and visibility.
- Fence sections interlink with TraFFix Water-Wall or Water-Cable Barrier to provide better overall stability and allows for changes on uneven ground.
- TraFFix Water-Wall and WWF can rotate up to 30° for easy layout and encircling of job sites.
- Additional hole provided at the upper end of T-Pin for security bolt for tamper resistance.

## WEIGHTS + MEASURES

HEIGHT	48 inches
LENGTH	72 inches
WEIGHT	32 lbs

**Also Available:**  
6' Single Gate  
12' Double Gate





SAN CLEMENTE, CALIFORNIA, USA



CINCINNATI, OHIO, USA



HOBOKEN, NEW JERSEY, USA



LOUISVILLE, KENTUCKY, USA



CINCINNATI, OHIO, USA



TrafFix Water-Wall Fence® and Water-Wall TL-2 Impacted by a 5,033 lb. (2,283 kg) Dodge Ram at 44 MPH (70 KPH)



#45032-WWF



# URBANITE WALL®



FARGO, NORTH DAKOTA, USA



BOSTON, MASSACHUSETTS, USA



TEMPE, ARIZONA, USA



PORTLAND, OREGON, USA



SAN FRANCISCO, CALIFORNIA, USA

## URBANITE®



- MASH tested, passed, and eligible as longitudinal channelizing device
- Two steel T-Legs deploy quickly for fast set-up. Leg turns parallel to wall for storage and stacking.
- Made of UV stabilized, high density polyethylene, the walls quickly and easily link together in 6' sections to allow flexibility in creating a safe pedestrian pathway or barrier separating spectators from your event.
- Durable double walled construction is non-flexible, yet lightweight making it easy to lift on and off a truck and easy to connect.
- Two recessed areas on each side accommodate reflective sheeting or sponsorship for advertising of your event.
- The ten vertical windows reduce wind load, add strength and stability, and reduce overall weight.

**3M**  
Channel Partner

### WEIGHTS + MEASURES

HEIGHT	38 inches
LENGTH	72 inches
WIDTH	3 inches
WEIGHT	23 lbs



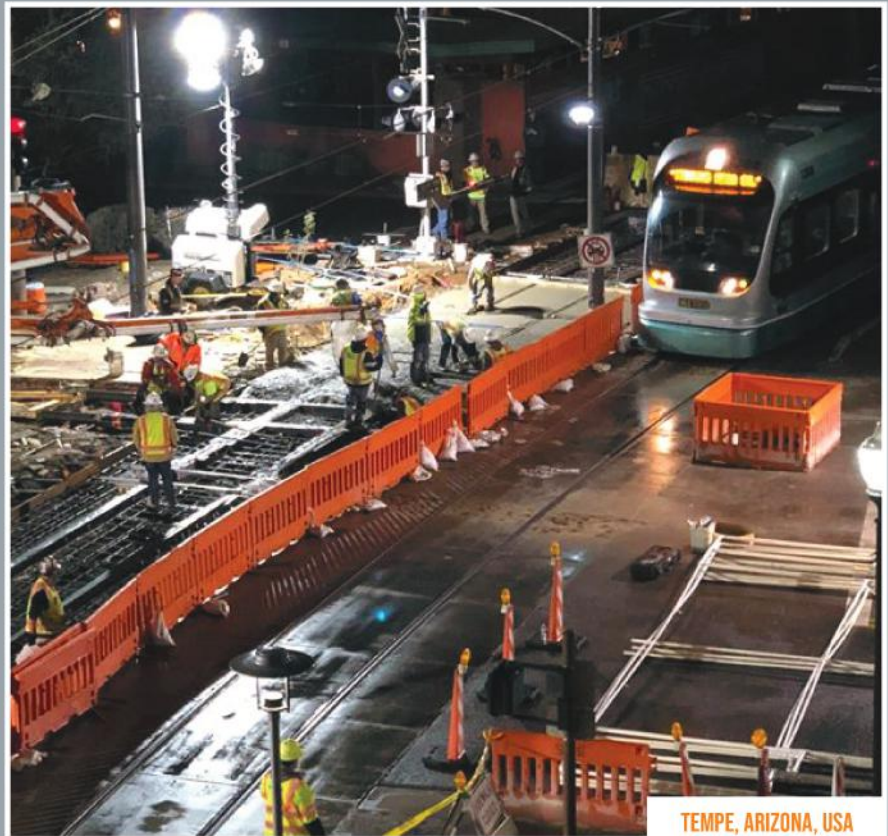
#57000-UO  
(orange)

#57000-UW  
(white)





SAN FRANCISCO, CALIFORNIA, USA



TEMPE, ARIZONA, USA



SANTA FE, NEW MEXICO, USA



STURGIS, SOUTH DAKOTA, USA



PETOSKEY, MICHIGAN, USA



**3M**  
Channel Partner

- Meets requirements of Americans with Disabilities Act (ADA) standards for accessible design with no tripping hazards for the sight-impaired.
- Smooth, uninterrupted handrail
- MASH tested, passed and eligible as longitudinal channelizing device.
- (2) Step-N-Deploy legs make set-up quick, easy, and safe.
- Made of UV stabilized, high density polyethylene, the walls quickly & easily link together in 6' sections to allow flexibility in creating a safe pedestrian pathway.
- Durable yet lightweight design makes it easy to lift and easy to connect.
- Ten molded-in vertical windows allow a guide dog to see what is on the other side while reducing wind load, adding strength & stability, & reducing overall weight.
- Accommodates uneven surfaces to create a clear, safe pedestrian pathway.
- Two recessed areas per side accommodate reflective sheeting.

## WEIGHTS + MEASURES

<b>HEIGHT</b>	38 inches
<b>LENGTH</b>	72 inches
<b>WIDTH</b>	3 inches
<b>WEIGHT</b>	23 lbs

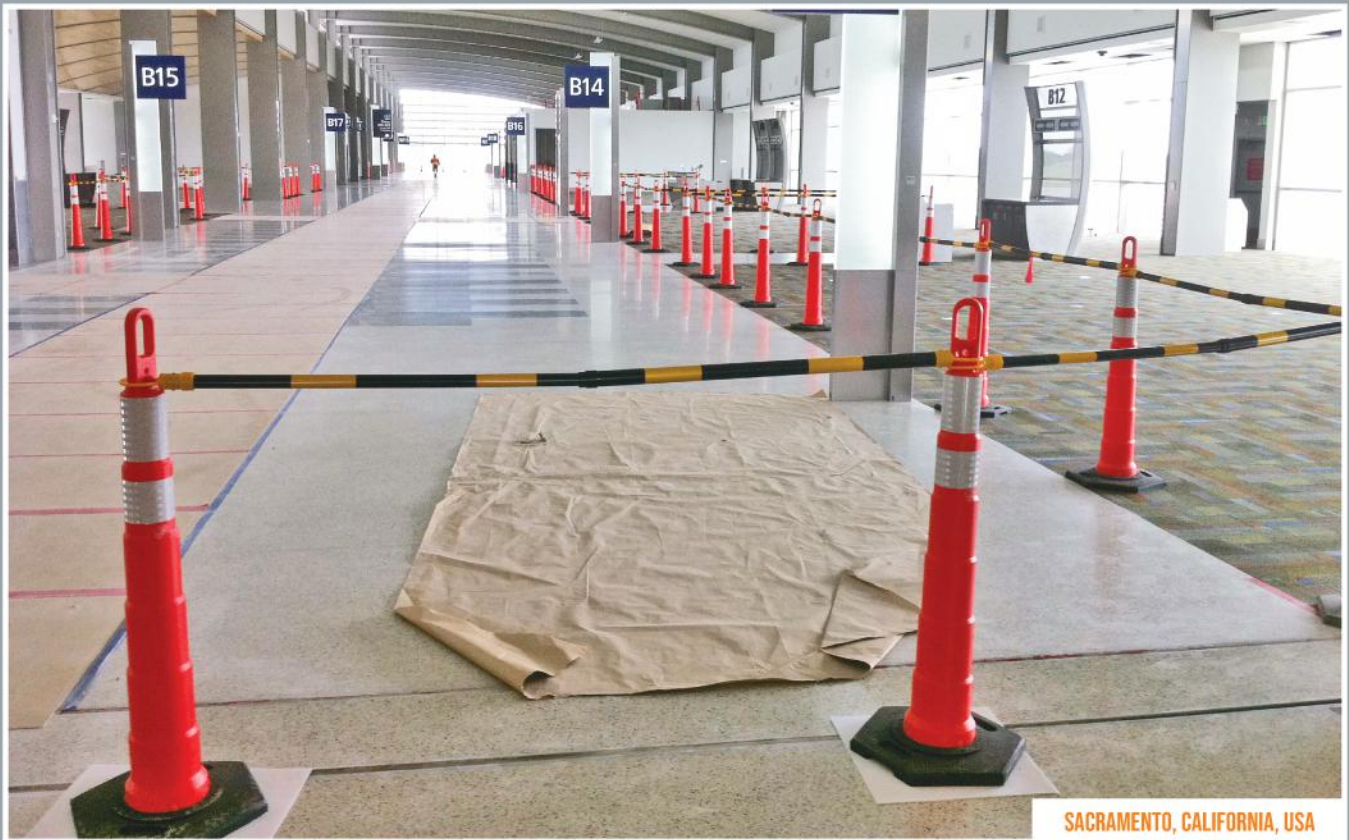


#57000-AW  
(white)

#57000-AO  
(orange)



# LOOPER® TUBES AND CONES + GRABBER® TUBES AND CONES



SACRAMENTO, CALIFORNIA, USA



SAN CLEMENTE, CALIFORNIA, USA



ORANGE COUNTY, CALIFORNIA, USA



MESQUITE, NEVADA, USA

**LOOPER®**  
CONES AND TUBES

**Grabber®**  
Cones and Tubes

**3M**  
Channel Partner

- Available heights of 28" or 42"
- Manufactured from durable, low density polyethylene with UV stabilizers added to minimize fading.
- The Looper & Grabber handle can accommodate caution tape, flag line, or rope.
- Innovative "Grabber" and "Looper" handles allows for easy movement and placement.
- Ideal for construction work zones, airports, parking lots and job sites.
- High visibility fluorescent orange — also available in yellow, black, & white.
- Recycled rubber bases stabilize cones and tubes, minimizing movement in the workzone and on the job site.
- All the different configurations of reflective collars and bands are available.



**#46000 Series**  
Looper Tube



**#42000 Series**  
Grabber Cone



# STEP-N-LOCK® + PREMIER PANEL™ VERTICAL BARRICADES



TEMPE, ARIZONA, USA



NOGALES, ARIZONA, USA



CARROLLTON, TEXAS, USA



RICHMOND, VIRGINIA, USA



LANCASTER COUNTY, PENNSYLVANIA, USA

## Step-n-Lock® Vertical Panel Barricade Premier Panel™ Vertical Panel Barricade

- Premier Panel is an all plastic and rubber vertical panel barricade that is designed to take repeated impacts with little or no damage to the Premier Panel or to the impacting vehicle
- Designed with a convenient handle which allows for easy movement and placement of the Premier Panel
- Premier Panel bases come in 20 and 30 lb. weights and stack for easy transport and storage
- Step-n-Lock Vertical Panel Barricade consists of durable blow molded polyethylene panel and recycled rubber base
- For transportation and storage, both the panels and bases can be easily separated and stacked

**3M**  
Channel Partner



#33000 Series  
Step-n-Lock



#40000 Series  
Premier Panel





SAN CLEMENTE, CALIFORNIA, USA



OKLAHOMA CITY, OKLAHOMA, USA



REDLANDS, CALIFORNIA, USA

## ENVIRO-CONE®



- The Enviro-Cone is 80% recycled by weight and can be recycled again. No more land fills loaded with toxic PVC cones. Enviro-Cone also qualifies for Green Points due to its high recycled content.
- If a stem gets destroyed, simply replace the stem and reuse the base. No need to buy the entire cone.
- Manufactured from low density polyethylene, they provide superior cold weather performance. No cracking or breaking down to -40° F.
- No more soft and droopy cones in hot weather. It stands tall and vertical in road temperatures exceeding 180° F.
- The Easy Grip Groove provides excellent "gription" for quick deployment and retrieval. Also makes tying off caution tape to cone quick and easy.



Channel Partner

### Retractable Cone Bar™ #150610A-CBOW Cone Bar



### Clip-On Signs for Cones & Delineators

#16100 Series Clip-On Signs





MIAMI, FLORIDA, USA



NEW YORK, NEW YORK, USA



SAN DIEGO, CALIFORNIA, USA

# ENVIRO-CONE®



#16018-HIWB-3  
18", 3# base

#16028-HIWB-7  
28", 7# base

#16036-HIWB-10  
36", 10# base

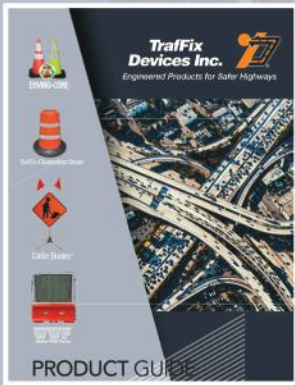
#16036-L-HIWB-10  
36", 10# base

#16028-L-HIWB-7  
28", 7# base

#16018-L-HIWB-3  
18", 3# base



## Traffix Product Guide



View our product guide at:  
[www.traffixdevices.com/catalog](http://www.traffixdevices.com/catalog)



160 Avenida La Pata  
San Clemente, CA 92673  
[info@traffixdevices.com](mailto:info@traffixdevices.com)  
(949) 361-5663  
[www.traffixdevices.com](http://www.traffixdevices.com)

**Traffix  
Devices Inc.**   
Engineered Products for Safer Highways